

22 JUN 94

NEW TUNNEL

DRILLED 1.5 OUTSIDE HOLES.
DRILLED TWO 4" CENTER HOLES.
DRILLED 15 INSIDE HOLES. PUMPED
OUT THE HEADING. PREPARED FOR
BLASTING, FRED CAME IN AT 5:45.
WE LOADED THE ROUND AND FIRED
AT 6:55. BROKE GOOD. THE TOP
OF THE FACE IS IN THE BROWN
WILLEMITE ZONE. STEVE STAYED
TO MUCK OUT.

23 JUN 94

NEW TUNNEL

THE EIMCO BROKE DOWN AGAIN. STEVE
WORKED ON IT ALL MORNING. I ADDED
A 20' PIECE TO THE VENT LINE AND
A 20' PIPE TO THE AIR LINE. STEVE
FINISHED MUCKING AFTER LUNCH. SET
UP THE "53" AND DRILLED NINE OUTSIDE
HOLES. MEASURED THE DECLINE. IT IS
NOW 110' LONG. TOTAL ON THE NEW
TUNNEL IS NOW 563.5'.

A IS 48" ABOVE FLOOR

A AND C' SAME ELEV,

C' 52" ABOVE C"

C" AND D' SAME ELEV.

D' IS 72" ABOVE D"

D" AND E SAME ELEV.

E IS 72" ABOVE FLOOR

$$\begin{array}{r} 52'' \\ + 72'' \\ \hline 124 \end{array}$$

A IS 10'4" ABOVE E

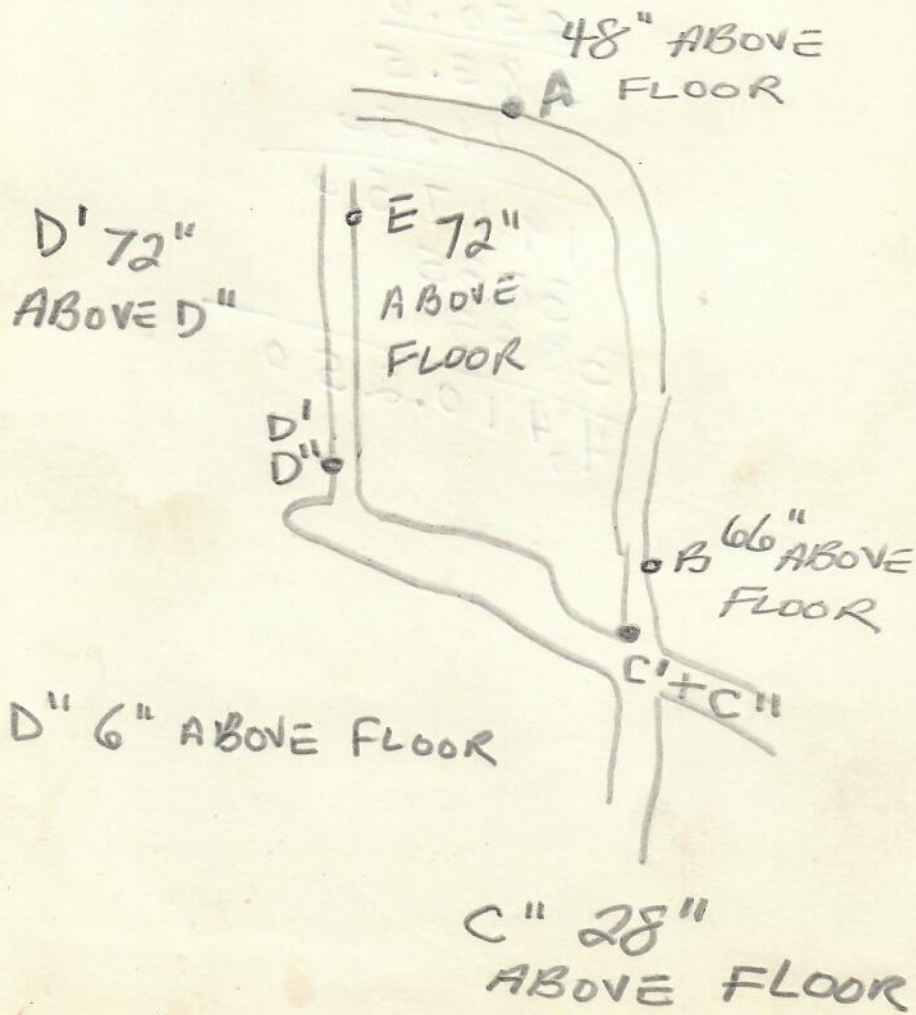
$$\begin{array}{r} + 2' \\ \hline 12'4'' \end{array}$$

$$\begin{array}{r} 103 \\ \hline 12 \overline{)124} \\ \underline{12} \\ 040 \end{array}$$

BACK AT E ABOUT
4' BELOW FLOOR AT A



C' 52" ABOVE C"



'93 - $\begin{array}{r} 31 \\ 430 \\ \hline 250 \\ \hline 180 \\ 11.5 \\ \hline 900 \\ 180 \\ 180 \end{array}$

2070.00 TO DATE '94
2000.00 EXPECTED
1000.00 EXPECTED

790.92 INT. LAST YEAR

4,000.00 - EXPECTED ON MINERALS

24 JUN 94

NEW TUNNEL

DRILLED ONE OUTSIDE HOLE. DRILLED FOUR TEST HOLES LOOKING FOR THE N.E. DRIFT. FOUND IT SEVEN FEET ABOVE THE DECLINE. DRILLED A 4" HOLE TO CONNECT THE DRIFTS. DRILLED TWO 4" CENTER HOLES IN THE NEXT ROUND. PUMPED OUT THE HEADING. RAN THE DISCHARGE HOSE THRU THE NEW VENT HOLE. PLUGGED THE 1 3/8" HOLE THAT HIT THE N.E. DRIFT AND FILLED IT WITH GROUT. GOT \$ 345 FOR DRIFTWORK. NOW PAID TO 550'.

27 JUN 94

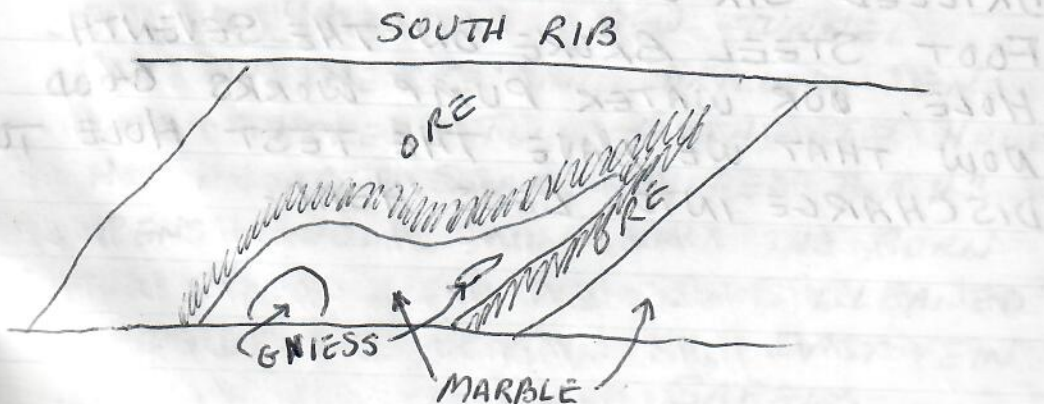
NEW TUNNEL

DRILLED 15 INSIDE HOLES. THE PUMP WOULD NOT WORK SO WE BAILED OUT THE HEADING WITH BUCKETS. PREPARED FOR BLASTING. FRED CAME IN AT 5:45. WE LOADED THE ROUND AND FIRED AT 7:10 PM. BROKE GOOD. FOUND SOME LONG WAVE BARITE.

28 JUN 94 NEW TUNNEL
SET UP THE "53" AND DRILLED
TEN OUTSIDE HOLES. SET UP THE
LONGHOLE DRILL AND DRILLED TWO
4" CENTER HOLES. PUMP WOULD NOT
WORK. BAILED WATER INTO THE EIMCO
BUCKET. REMOVED THREE LOADS.

29 JUN 94 NEW TUNNEL
DRILLED 15 ~~2~~ INSIDE HOLES.
PREPARED FOR BLASTING. BAILED
OUT THE HEADING. TWO EIMCO LOADS.

30 JUN 94 NEW TUNNEL
MET FRED AT 6:30 AM. WE LOADED
THE ROUND AND FIRED AT 8:00 AM.
BROKE GOOD. STEVE MUCKED OUT. HAND
MUCKED AND SET UP THE "53". DRILLED
TEN OUTSIDE HOLES. THEY ALL HIT THE
HANGING WALL. DRILLED $\frac{1}{3}$ OF A 4"
CENTER HOLE.



1 JUL 94

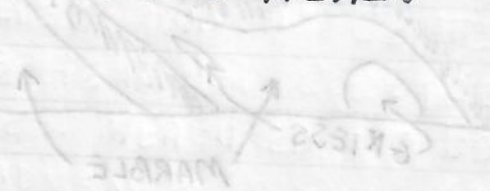
NEW TUNNEL

DRILLED 1 2/3 4" CENTER HOLES.
DRILLED 15 INSIDE HOLES. PREPARED
FOR BLASTING. FRED CAME IN AT
7 PM. WE LOADED THE ROUND AND
FIRED AT 8:10 PM. BROKE GOOD.
THE DRIFT IS THRU THE ORE AND
INTO THE H/W. GOT \$230 FOR
DRIFT WORK. NOW PAID TO 570'.

5 JUL 94

NEW TUNNEL

DRILLED A TEST HOLE TO THE EAST
VEIN STOPE. HIT IT AT 44'. HIT A
SOFT SPOT AT 20' WHICH ABSORBED
ALL THE WATER AND CUTTINGS FROM
20' TO 44'. THE HOLE CAME OUT 2'
ABOVE THE HIGH WATER MARK IN THE
STOPE AND RIGHT ACROSS FROM THE
H/W DRIFT. NOW WE HAVE SOMETHING
TO FOLLOW. SET UP THE "53" AND
DRILLED SIX OUTSIDE HOLES. THE NINE
FOOT STEEL BROKE ON THE SEVENTH
HOLE. OUR WATER PUMP WORKS GOOD
NOW THAT WE HAVE THE TEST HOLE TO
DISCHARGE INTO. LESS HEAD.



6 JUL 94

NEW TUNNEL

WENT IN AT 5 PM AND BAILED
13 PAILS OF WATER OUT OF THE
HEADING. BLEW OUT THE BOTTOM
HOLES AGAIN. FRED CAME IN AT
5:45. WE LOADED THE ROUND
AND FIRED AT 7 PM. HAD TO USE
A NEW SEQUENCE OF CAPS BECAUSE
FRED WAS SHORT ON 10'S AND 12'S.
BROKE GOOD. STEVE STAYED TO MUCK
OUT.

8 JUL 94

NEW TUNNEL

SET UP THE "53" AND DRILLED TEN
OUTSIDE HOLES. TWO OF THE TOP HOLES
HIT AN OPEN SEAM. DRILLED TWO 4"
CENTER HOLES. WILL HOLD THE BURN
TO 8' TO AVOID THE SEAM. CLEANED UP
AROUND THE HOLE IN THE EAST VEIN SO
IT CAN BE EXAMINED SAFELY.

11 JUL 94

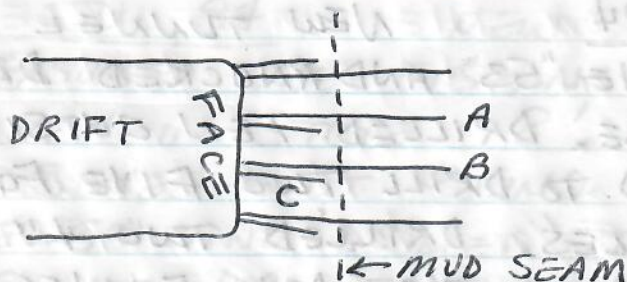
NEW TUNNEL

WENT IN AT 5 PM AND BAILED
13 PAILS OF WATER OUT OF THE
HEADING. BLEW OUT THE BOTTOM
HOLES AGAIN. FRED CAME IN AT
5:45. WE LOADED THE ROUND
AND FIRED AT 7 PM. HAD TO USE
A NEW SEQUENCE OF CAPS BECAUSE
FRED WAS SHORT ON 10'S AND 12'S.
BROKE GOOD. STEVE STAYED TO MUCK
OUT.

15 JUL 94

NEW TUNNEL

DRILLED 15 INSIDE HOLES, DRILLED
SHORT HELPER HOLES FOR SIX OF
THEM. PREPARED FOR BLASTING. FRED
CAME IN AT 6 PM. WE LOADED THE
ROUND AND FIRED AT 7:10. BROKE
GOOD. GOT \$230 FOR DRIFT WORK.
NOW PAID TO 590'.



WHEN HOLE A GOES OFF GAS PRESSURE
BLOWS POWDER OUT OF HOLE B FROM
THE MUD SEAM TO THE FACE. THAT CAN
CAUSE THE ROUND TO FAIL TO BREAK.
SHORT HOLE C LOADED WITH THE
SAME CAP NUMBER PREVENTS THAT.

18 JUL 94

NEW TUNNEL

SET UP THE "53" AND USED IT TO KNOCK
DOWN SOME LOOSE. THE SEAMS WE JUST
WENT THRU MAKE BAD GROUND CONDITIONS.
DRILLED TEN OUTSIDE HOLES. DRILLED TWO
4" CENTER HOLES. FOUND ANOTHER MUD
SEAM AT SIX FEET. WILL HAVE TO HOLD
THIS ROUND BACK TO A FIVE FOOTER.

19 JUL 94 NEW TUNNEL
DRILLED 15 INSIDE HOLES. DRILLED
EIGHT SHORT HELPER HOLES.
PREPARED FOR BLASTING. FRED
CAME IN AT 5:25 PM. WE LOADED
THE ROUND AND FIRED AT 6:45 PM.
BROKE GOOD.

20 JUL 94 NEW TUNNEL
SET UP THE "53" AND KNOCKED DOWN
SOME LOOSE. DRILLED TEN OUTSIDE
HOLES. HAD TO DRILL TWO FIVE FOOT
HELPER HOLES. DRILLED TWO 4"
CENTER HOLES. MET DOUG FRANCISCO
AT THE MINE AT 6 PM. WE DISCUSSED
THE RAISE ROUNDS HE IS GOING TO DRILL.

21 JUL 94 NEW TUNNEL
DRILLED 13 INSIDE HOLES. THE
COMPRESSOR IS MESSSED UP AGAIN.
GOT \$230 FOR DRIFT WORK. NOW
PAID TO 610'.

22 JUL 94

NEW TUNNEL

WENT IN AT 6 AM TO FINISH THE ROUND. PREPARED FOR BLASTING. FRED CAME IN AND WE LOADED THE ROUND. FIRED AT 8:30 AM. BROKE VERY GOOD. STEVE MUCKED OUT.

25 JUL 94

NEW TUNNEL

MEASURED THE DISTANCE TO THE EAST VEIN STOPE. 8'. WILL DRILL A SEVEN FOOT ROUND. SET UP THE "53" AND DRILLED TEN OUTSIDE HOLES. DRILLED TWO 4" CENTER HOLES.

26 JUL 94

NEW TUNNEL

DRILLED 15 INSIDE HOLES, BLEW OUT HOLES AND PREPARED FOR BLASTING.

28 JUL 94

NEW TUNNEL

MET FRED AT THE MINE AT 8 AM. WE LOADED THE ROUND AND FIRED AT ABOUT 9:25 AM. BROKE INTO THE OLD EAST VEIN STOPE IN GOOD SHAPE. STEVE MUCKED OUT. RICH LUZZI AND ME HAND MUCKED AT THE END TO PREVENT ORE FALLING INTO THE STOPE. THERE IS A ONE FOOT HIGH LIP AT THE END. WE WILL LEAVE IT FOR NOW AS A BERM.

29 JUL 94

NEW TUNNEL

WORKED IN THE N.E. TUNNEL
NEAR THE END. I AM DRILLING
A STRIP 4' DEEP X 8' LONG. A
POWER PANEL WILL BE INSTALLED
THERE. DRILLED 12 NINE FOOT
HOLES AND 3 SEVEN FOOT HOLES.
STEVE USED THE EIMCO TO MOVE
MUCK FROM THE WASTE PILE AND
DUMP IT IN THE EAST VEIN STOPE.

1 AUG 94

NEW TUNNEL

DRILLED $5\frac{1}{2}$ HOLES TO FINISH
THE STRIP ROUND. BLEW OUT
THE HOLES AND CLEARED AWAY ALL
GEAR. STEVE TRAMMED MUCK TO THE
STOPE. AFTER LUNCH WE SET UP
THE LONG HOLE MACHINE TO DRILL
A 4" CENTER HOLE FOR A RAISE.
THE BORO SHUT OFF THE WATER
DUE TO PIPELINE CONSTRUCTION.
QUIT FOR THE DAY. MEASURED
THE DECLINE. 180'. TOTAL OF
JOB NOW 633.5'.

2 AUG 94 NEW TUNNEL
DRILLED A 4" CENTER HOLE FOR A
RAISE AT THE NORTH END OF THE
DISPLAY STOPE. MADE IT 18' LONG
SO TWO 9' ROUNDS CAN BE DRILLED.
MOVED TO THE ENTRANCE DRIFT NEAR
OUR ORIGINAL STARTING POINT, WE
WILL HAVE ANOTHER RAISE THERE FOR
A DISPLAY CHUTE. RAN OUT OF DRILL
OIL AND HAD TO QUIT. GOT \$270.25
FOR DRIFT WORK. NOW PAID TO
633.5'. TOTAL IN '94 - 4,410.25

3 AUG 94 NEW TUNNEL
BOB ROME BROUGHT IN 5 GAL.
OF DRILL OIL LAST NIGHT. DRILLED
A 4" CENTER HOLE, EIGHT FEET
LONG, FOR THE SECOND RAISE.
REMOVED THE VENT PIPE FROM
THE STOPE. SHORTENED THE AIR
LINE BY 60' IN THE STOPE. ADDED
40' OF AIR LINE IN THE N/E DRIFT.
SET UP THE "53" IN THE N/E
DRIFT AND USED IT TO KNOCK
DOWN SOME LOOSE. PUT IN TWO
ROCK BOLTS.

8 AUG 94 NEW TUNNEL

SET UP A "53" AT THE NORTH
END OF THE DISPLAY STOPE.
DOUG FRANCISCO CAME IN AND
DRILLED A 9' RAISE ROUND.
STEVE GOT ENOUGH FILL IN THE
EAST VEIN STOPE TO REACH THE
OLD ADIT.

9 AUG 94 NEW TUNNEL

DRILLED A 7' RAISE ROUND NEAR
THE ENTRANCE. IT WILL BE MADE
INTO A DEMONSTRATION CHUTE.

13 AUG 94 NEW TUNNEL

SET UP THE "53" AT THE EAST END
OF THE DECLINE TO THE EAST VEIN.
DRILLED HOLES IN THE LIP (SEE 28
JULY 94) AND BROKE IT OUT WITH
FEATHERS AND WEDGES. THERE IS ENOUGH
FILL IN THE EAST VEIN STOPE SO
THAT A BERM IS NO LONGER NEEDED.

15 AUG 94 NEW TUNNEL
MET FRED AT THE MINE AT 4:30 PM.
WE LOADED THE POWER PANEL
STRIP AND THE 7' RAISE ROUND.
FIRED AT 6 PM. BOTH BROKE GOOD.
ALSO FIRED A POP HOLE WHERE I
WORKED ON SATURDAY. A UNIVERSAL
JOINT BROKE ON THE EIMCO TODAY.

16 AUG 94 NEW TUNNEL
SET UP A NEW "53" AT THE EAST
END OF THE DECLINE. DRILLED SOME
SHORT HOLES AND WEDGED OUT THE
LAST OF THE LIP. MOVED ABOUT 40'
WEST AND DRILLED SOME STRIP HOLES
IN THE BACK OF THE DRIFT. THE
DECLINE IS TOO STEEP THERE AND
WE HAVE TO RAISE THE GRADE. FRED
KIRK FINISHED REPAIRS ON THE EIMCO.
THE ROSIN BOLTS I ORDERED ARRIVED.

17 AUG 94 NEW TUNNEL
AFTER STEVE MUCKED OUT THE RAISE MUCK
WE SET UP A "53" AND DRILLED A CHUTE
STRIP. 32 HOLES.

23 AUG 94 NEW TUNNEL
BEGAN SCALING LOOSE ABOVE
THE TUNNEL EXIT TO THE PARKING
LOT. TIED A SAFETY CHAIN TO A
TREE AND HUNG FROM IT WHILE
WORKING. GOT DOWN A LOT OF STUFF.

24 AUG 94 NEW TUNNEL
SCALED MORE LOOSE IN THE MORNING.
WENT TO FRANKLIN AT LUNCH
TIME. WANTAGE EXCAVATING IS
DIGGING A DITCH AT THE PHONE
COMPANY ACROSS FROM THE FIRE
HOUSE. SAW A FEW MINE ROCKS
AND PICKED UP ONE HARDYSTONITE.

25 AUG 94
BROUGHT TWELVE BUNDLES OF ROCK
BOLTS OUT TO THE GARAGE. CLEANED
THEM UP WITH THE WIRE WHEEL AND
WD-40. WE ARE KILLING TIME WHILE
WAITING FOR FRED TO GET POWDER.

30 AUG 94 NEW TUNNEL

MET FRED AT THE MINE AT 6:30 AM.
WE LOADED THE CHUTE STRIP, THE
RAISE, AND BOTH STRIPS. FIRED AT
10 AM. THE RAISE ROUND DID NOT
BREAK. THE REST WAS OK. SET
UP A "53" AT THE CHUTE STRIP.
SCALED AND BOLTED. 7 BOLTS.

31 AUG 94 NEW TUNNEL

SCALED AND BOLTED THE CHUTE
STRIP. 7 BOLTS. SET UP A "53"
(LONG LEG) IN THE STOPE AND
DRILLED FOUR STRIP HOLES IN
THE BACK. MOVED EVERYTHING OUT
OF THE WAY FOR BLASTING. HAD
TROUBLE WITH THE COMPRESSOR THE
LAST TWO DAYS. IT SHUTS OFF
FREQUENTLY.

1 SEP 94 NEW TUNNEL

FRED CAME IN AT 4 PM. WE LOADED
THE STRIP AND RELOADED THE RAISE,
FIRED AT 5 PM, BROKE GOOD. THIS
SHOULD BE THE END OF THE BLASTING.

5 SEP 94

NEW TUNNEL

SET UP A "53" IN THE DEMO STOPE.
SCALED AND BOLTED. 15 BOLTS.
HAD TO DRILL DOWN A LOT OF
LOOSE, A SLOW AND TEDIOUS JOB.

6 SEP 94

NEW TUNNEL

SCALED AND BOLTED. 8 BOLTS.
HAD TO DRILL DOWN MORE LOOSE.
QUIT AFTER LUNCH WHEN THE
COMPRESSOR BROKE DOWN.

12 SEP 94

NEW TUNNEL

SCALED AND BOLTED. 5 BOLTS.
SPENT MOST OF THE DAY DRILLING
DOWN LOOSE ROCK.

13 SEP 94

NEW TUNNEL

SCALED AND BOLTED. GOT THE
SOUTH END OF THE STOPE DONE.
MUCH ROCK IS BEING DUMPED
IN THE FILL QUARRY. IT IS
GRANITE FROM THE TOWN'S NEW
WATER TOWER SITE NEAR
HEATERS POND. HAD TO REPLACE
THE "53", TRIED 5 DRILLS BEFORE
WE FOUND A GOOD ONE.

22
BOLTS

9 SEPT.

1. CHUTE STRIP 32 HOLES (6 THREE FOOT AND 6 FOUR FOOT AND 20 FIVE FOOT)

2. DECLINE STRIP 3 THIRTEEN FOOT AND 5 FIVE FOOT

3. STOPE STRIP 2 THIRTEEN FOOT AND 1 SEVEN FOOT

4. RAISE ROUND 16 NINE FOOT HOLES

1. 142'

2. 64'

3. 33'

4. 144'

383'

16
x 9

144'

14 SEP 94 NEW TUNNEL
SCALED AND BOLTED. 23 BOLTS.

15 SEP 94 NEW TUNNEL
SCALED AND BOLTED, 15 BOLTS.
SPENT MOST OF THE MORNING
DRILLING DOWN LOOSE, THAT IS
MOSTLY FINISHED NOW.

16 SEP 94 NEW TUNNEL
SCALED AND BOLTED. 14 BOLTS.
SPENT THE AFTERNOON CLEANING
UP 8 BUNDLES OF BOLTS. TRUCKED
THEM OUT TO THE TUNNEL.

19 SEP 94 NEW TUNNEL
SCALED AND BOLTED. 11 BOLTS.
SPENT A LOT OF TIME DRILLING
DOWN LOOSE.

20 SEP 94 NEW TUNNEL
SCALED AND BOLTED. 21 BOLTS.
THE RAISE ROUND AT THE NORTH
END OF THE SLOPE BOOED ABOUT
18 INCHES. KNOCKED SOME OF THAT
DOWN BY DRILLING INTO IT WITH
A 7' STEEL.

21 SEP 94 NEW TUNNEL
FINISHED SCALING AND BOLTING
IN THE SLOPE. 10 BOLTS, MOVED
TOOLS OUT OF THE WAY AND
STEVE BEGAN MUCKING, WASHED
OFF THE DECLINE WALLS WHERE
IT GOES THRU THE BROWN
WILLEMITE ZONE. PREPARED TO
MOVE OUTSIDE.

22 SEP 94 NEW TUNNEL
ADDED 40' TO THE WATER PIPE.
MOVED TOOLS TO THE TUNNEL
OUTLET BY THE OLD SHAFT. SET
UP TO INSTALL RESIN BOLTS.
PUT IN FOUR. LOOKS LIKE ITS
GONNA WORK GOOD.

26 SEP 94 NEW TUNNEL
PUT IN SEVEN RESIN BOLTS. HAD
BOB PILE UP MORE DIRT TO RAISE
THE WORK AREA. PUT IN FIVE MORE
BOLTS.

28 SEP 94 NEW TUNNEL
GATHERED MATERIAL TO BUILD A SCAFFOLD.
BEGAN TO SET IT UP.

29 SEP 94 NEW TUNNEL

WORKED ON THE SCAFFOLD. GOT MOST OF IT DONE. ONLY NEED PLANKS FOR THE WORK PLATFORM. GRACE WOODARD STOPPED BY AND SHOWED US PHOTOS OF SWEET HOME MINE.

30 SEP 94 NEW TUNNEL

FINISHED THE WORK PLATFORM. PUT IN SIX RESIN BOLTS. SCALED LOOSE IN A BAD AREA.

3 OCT 94 NEW TUNNEL

PUT IN ONE MORE RESIN BOLT. USED A BLOWPIPE TO BLOW LOOSE ROCK OUT OF THE BAD AREA. DRILLED TWO 3' HOLES. BEGAN INSTALLING HURRICANE FENCE OVER THE BAD AREA. PUT IN TWO 3' BOLTS TO TACK IT DOWN.

5 OCT 94 NEW TUNNEL

FINISHED COVERING BAD AREA WITH HURRICANE FENCE AND PUT ANOTHER 3' BOLT IN IT. LOWERED THE PLATFORM ABOUT SIX FEET. SET EVERYTHING UP TO BOLT TOMORROW.

6 OCT 94 NEW TUNNEL

PUT IN FOUR RESIN BOLTS.

PUT IN TWO 3' BOLTS IN
THE HURRICANE FENCE.

DISMANTLED THE SCAFFOLD.

PUT IN ANOTHER RESIN BOLT

FROM THE DIRT PILE. BOB

BEGAN REMOVING THE DIRT

PILE.

7 OCT 94 NEW TUNNEL

HELPED BOB OPEN UP A SECTION

OF THE OLD MILL FOUNDATION.

IT SEEMS TO BE THE TOP OF

AN OLD WASTE ROCK RAISE. THE

OPENING OF THE NEW TUNNEL

LOOKS PRETTY GOOD. TOOK ONE

HUMP OUT OF THE FLOOR. HAVE TO

GET ONE MORE.

11 OCT 94 NEW TUNNEL

HAND MUCKED AROUND THE FOUNDATION

WHILE STEVE SCRAPED OFF THE

CONCRETE FLOOR. SCALED AND BOLTED.

20 BOLTS. GOT STARTED INTO

THE TUNNEL.

12 OCT 94 NEW TUNNEL
SCALED AND BOLTED. SLOW GOING
DUE TO LOTS OF LOOSE. HAVE TO
DRILL INTO IT TO GET IT TO FALL
DOWN.

13 OCT 94 NEW TUNNEL
SCALED AND BOLTED. GOT THRU
THE WORST GROUND. STEVE MUCKED
MOST OF THE FILL OFF THE CONCRETE
FLOOR. BOB CUT OFF THE STUBS OF
OLD MILL BEAMS.

14 OCT 94 NEW TUNNEL
SCALED AND BOLTED. RAN INTO
ANOTHER PATCH OF BAD GROUND.

16 OCT 94 NEW TUNNEL
CLEANED UP NINE BUNDLES OF
SIX FOOT BOLTS.

18 OCT 94 NEW TUNNEL
SCALED AND BOLTED. DRILLED FOUR
SHORT HOLES SO FRED KIRK CAN INSTALL
A POWER PANEL. DRILLED A 7' HOLE FOR
A GROUND WIRE.